

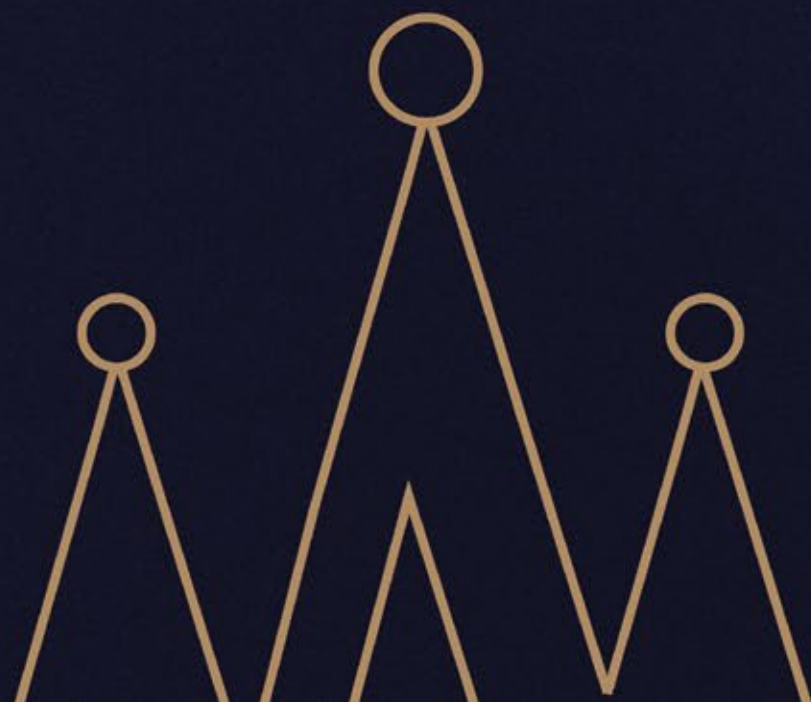
RC/REP/HARERA/GGM/687/419/2023/31, Dated: 02.02.2023
Promoter Name - Metro Education & Welfare Private Limited
www.haryanarera.gov.in



MEM
CROWN

ROYALTY, REDEFINED IN A SPACE

THAT FITS YOUR DISTINCTION





An Address Rising At A Thriving Location

*All distances mentioned are approximations only



Enjoy The Dynamics Of A Class Apart Address



3 KMS*
FROM
IGI AIRPORT



5 KMS*
FROM
CYBER HUB



7 KMS*
FROM
DWARKA METRO



9 KMS*
FROM
VASANT KUNJ



0 KM*
FROM
DELHI

*Actual distance and travel time may vary as per driving conditions



Delve Into A Realm Of Exceptional Marvel And Wonder

Immerse yourself in the exquisite allure of high-rise 3 and 4 bedrooms adorned with opulence. These resplendent residences intertwine seamlessly with a flourishing infrastructure in close proximity. Prepare to immerse yourself in an experience that has long occupied the pinnacle of your aspirational desires, now artfully manifested in an enchanting realm of reality.





ARTISTIC IMPRESSION



A Space Blessed By Nature's Grandeur

The plush settings of our iconic clubhouse are sure to offer you cherished memories. Engage in a plethora of amenities and facilities and pave the way to a wholesome living.



Interiors That Are Sure To Inspire Wonder



Pamper your senses with a home that's adorned with superior interiors. Here's a space that perfectly syncs with your distinguished choices.



ARTISTIC IMPRESSION



Unwind In Rare
Hues Of Royalty



A Delightful Blend For Your Leisures

Enjoy amenities spread across
75,000 sq. ft. (6,967.728 sq.mtr.)
and make the merriest moments
with your favourite activities.





3 BHK (1605 Sq. Ft.)



"PLAN NOT TO SCALE DISCLAIMER:
Layout can be mirrored as per specific location.
The images are for illustrative and indicative purposes only.
Furniture layout and furnishings are for illustrative and indicative purposes only."

3 BHK WITH DECK (1665 SQ.FT.)



"PLAN NOT TO SCALE DISCLAIMER:
Layout can be mirrored as per specific location.
The images are for illustrative and indicative purposes only.
Furniture layout and furnishings are for illustrative and indicative purposes only."

3 BHK + STUDY (1825 SQ.FT.)



"PLAN NOT TO SCALE DISCLAIMER:
Layout can be mirrored as per specific location.
The images are for illustrative and indicative purposes only.
Furniture layout and furnishings are for illustrative and indicative purposes only."

3 BHK + STUDY WITH DECK (1895 SQ.FT.)



"PLAN NOT TO SCALE DISCLAIMER:
Layout can be mirrored as per specific location.
The images are for illustrative and indicative purposes only.
Furniture layout and furnishings are for illustrative and indicative purposes only."

3BHK + STUDY + UTILITY (2080 SQ. FT.)



"PLAN NOT TO SCALE DISCLAIMER:
Layout can be mirrored as per specific location.
The images are for illustrative and indicative purposes only.
Furniture layout and furnishings are for illustrative and indicative purposes only."

3BHK + STUDY + UTILITY WITH DECK (2170 SQ.FT.)



"PLAN NOT TO SCALE DISCLAIMER:
Layout can be mirrored as per specific location.
The images are for illustrative and indicative purposes only.
Furniture layout and furnishings are for illustrative and indicative purposes only."

4 BHK + UTILITY (2305 SQ.FT)



"PLAN NOT TO SCALE DISCLAIMER:
Layout can be mirrored as per specific location.
The images are for illustrative and indicative purposes only.
Furniture layout and furnishings are for illustrative and indicative purposes only."

4BHK + UTILITY WITH DECK (2400 SQ.FT.)



"PLAN NOT TO SCALE DISCLAIMER:
Layout can be mirrored as per specific location.
The images are for illustrative and indicative purposes only.
Furniture layout and furnishings are for illustrative and indicative purposes only."

4BHK + STUDY + UTILITY (2570 SQ.FT.)



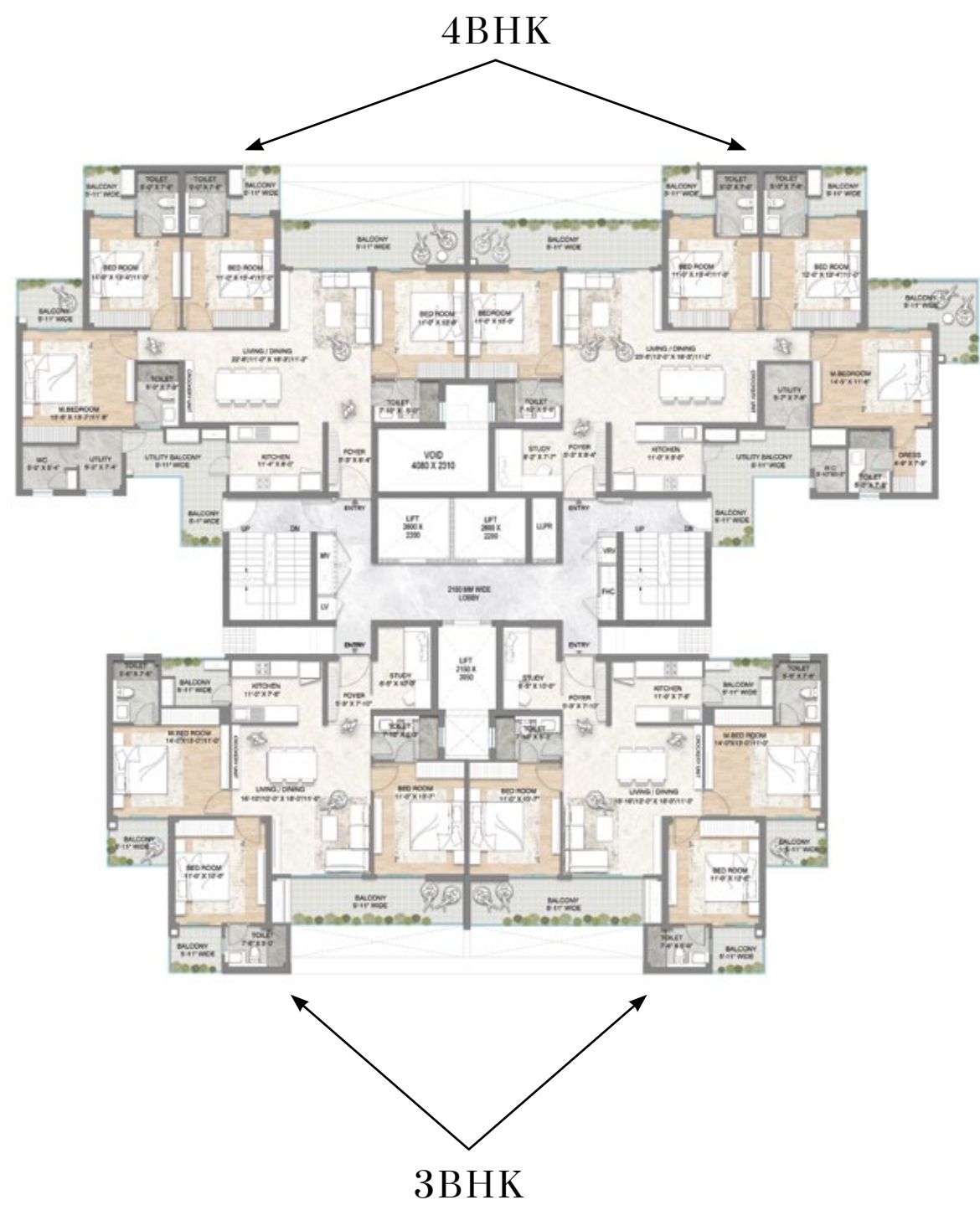
"PLAN NOT TO SCALE DISCLAIMER:
Layout can be mirrored as per specific location.
The images are for illustrative and indicative purposes only.
Furniture layout and furnishings are for illustrative and indicative purposes only."

4BHK + STUDY+ UTILITY
WITH DECK (2670 SQ.FT.)

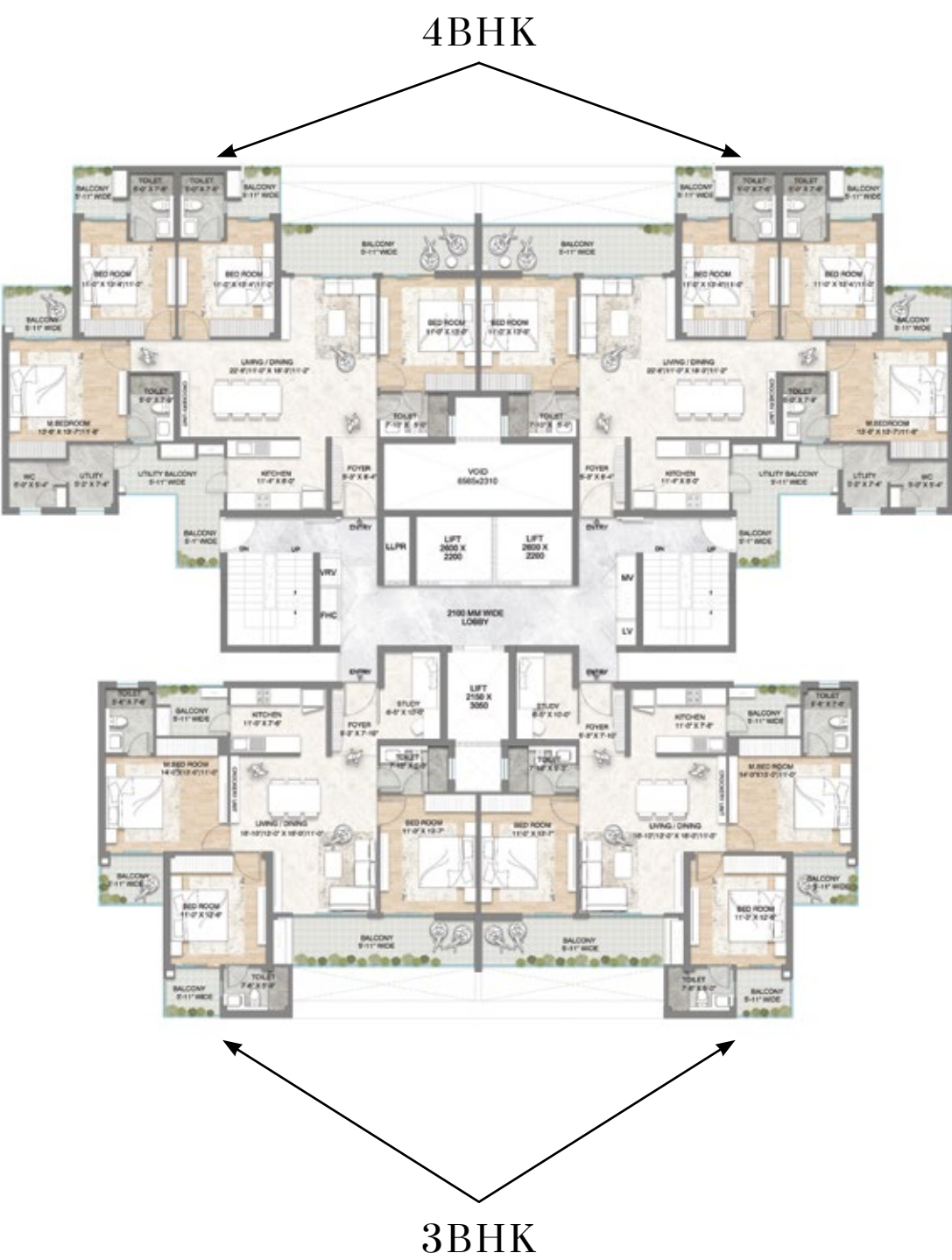


"PLAN NOT TO SCALE DISCLAIMER:
Layout can be mirrored as per specific location.
The images are for illustrative and indicative purposes only.
Furniture layout and furnishings are for illustrative and indicative purposes only."

M3M CROWN TOWER 1 & 2



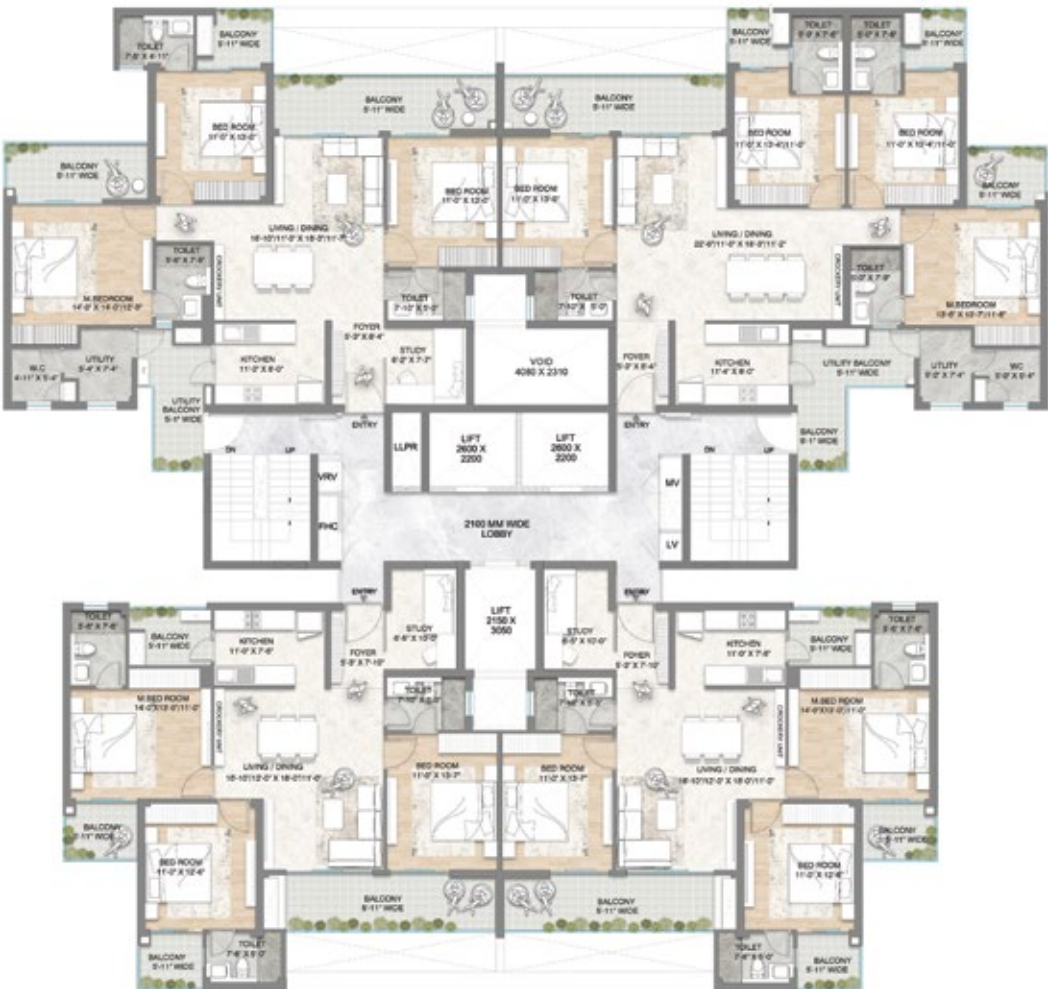
M3M CROWN TOWER 13



M3M CROWN TOWER 6 & 8

3BHK

4BHK



3BHK

M3M CROWN TOWER 9 & 11

3BHK

4BHK

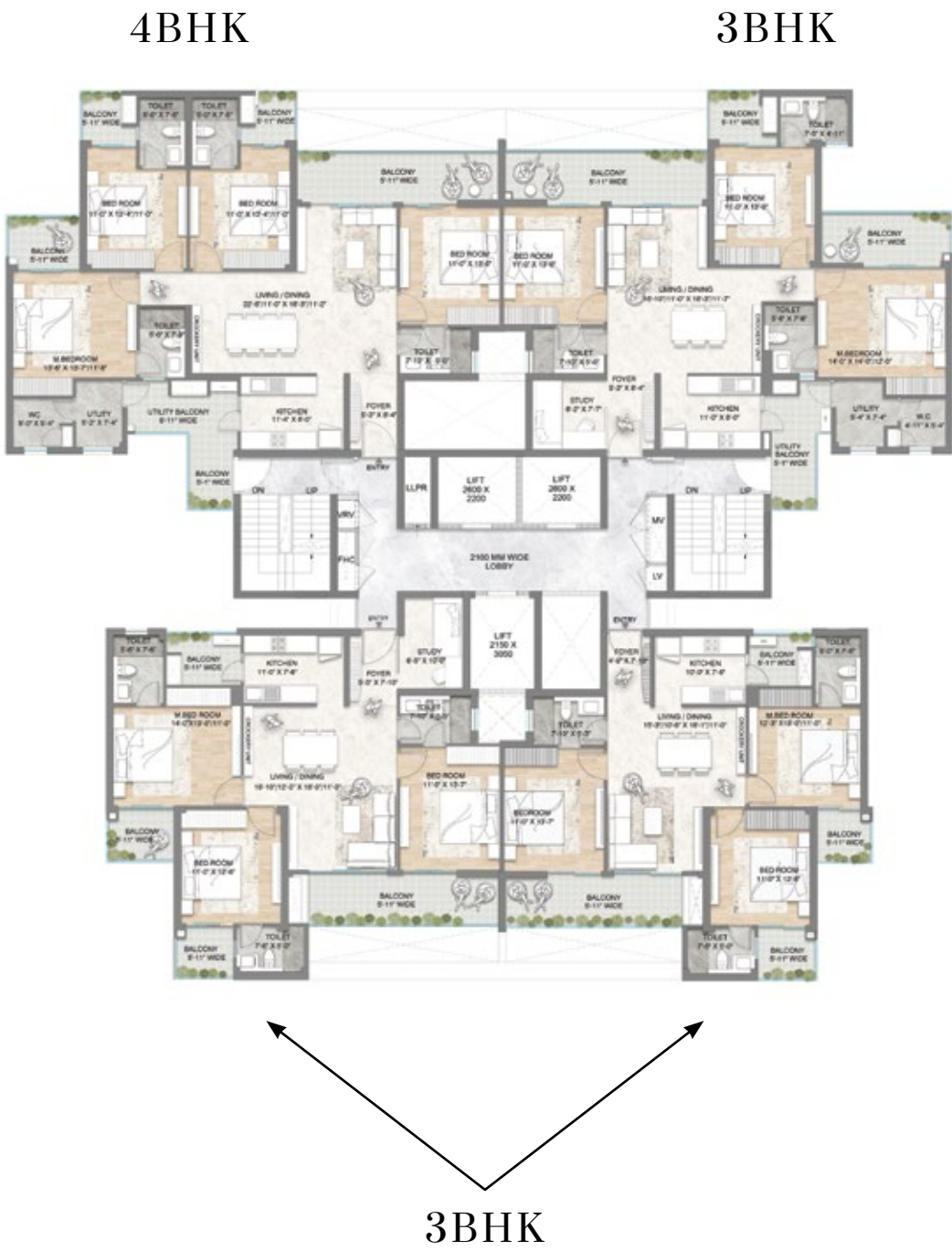


3BHK

M3M CROWN TOWER 7 & 10



M3M CROWN TOWER 12 & 14







Metro Education & Welfare Private Limited
(CIN- U70100HR2010PTC086524)

Registered Office:

41st Floor, Tower-1, M3M International Financial Center, Sector-66,
Gurugram-122101, Haryana

Sales Gallery:

M3M Experia, Sector 113, Dwarka Expressway,
Smart City Delhi Airport, Gurugram

CRM Lounge:

10th Floor, M3M Urbana Business Park, Tower A, Sector 67, Golf Course Road (Extn.),
Gurugram 122101, Haryana, India

Project Site:

M3M Crown Situated at Village Chauma, Sector 111, Gurugram 122017,
Haryana, India

📧 feedback@M3MIndia.com | 🌐 www.M3MIndia.com

Disclaimer: The contents, information, images and visuals or sketches including landscaping in this brochure are only an architect's impression, representative images or artistic renderings for general informational purposes only. Nothing contained in this brochure intends to constitute a legal offer and does not form part of any legally binding agreement and/or commitment of any nature. Every endeavour has been made to keep the information updated. However, Promoter Company make no representations or warranties of any kind, express or implied, about the completeness, accuracy, reliability, suitability or availability with respect to this Brochure or the information, specification, or related graphics contained in this Brochure for any purpose. Recipient(s)/viewer(s) accessing this Brochure are advised to exercise their discretion in relying on the information shown/provided and are requested to verify all the details, including area, amenities, services, terms of sales and payments and other relevant terms independently with the Promoter Company, have thorough understanding of the same and take appropriate advice prior to concluding any decision for buying any Unit(s) in the Project. "M3M Crown" is a standalone Commercial Project situated at Sector -111, Gurugram, Manesar Urban Complex, District Gurugram (Haryana) on the land admeasuring 64724.4 sq. mtr. or 15.9 Acres, being developed by M/s Metro Education & Welfare Private Limited (fully owned subsidiary of M/s M3M India Private Limited), as Mixed Land Use under TOD Policy-2016, approval for which was granted by DTCP vide Memo No. 213 of 2022, dated 18.11.2022. The Project is duly registered with Haryana Real Estate Regulatory Authority vide Regn. No. RC/REP/HARERA/GGM /687/419/2023/31, dated 02.02.2023. The use of word 'M3M' shall in no manner be construed or interpreted as M3M India Pvt. Ltd. being the Promoter and / or Developer of the Project. Dispute with regard to the interpretation of information will be subject to the exclusive jurisdiction of District Courts at Gurugram and Hon'ble High Court of Punjab & Haryana at Chandigarh, India. 1 Hect. = 2.471 Acres, 1 Acre = 4840 sq. yds. or 4046.86 sq. mtrs., 1 sq. mtr. = 10.764 sq. ft

Experience
A WORLD OF INDULGENCE WITH A
GOLF STYLE LIVING!



M3M
CAPITAL
LUXURY GOLF RESIDENCES

📍 SECTOR 113, SMART CITY DELHI AIRPORT, GURUGRAM

CONNECTED TO ALL MAJOR LANDMARKS

THROUGH THE WIDEST ROAD OF DELHI NCR

AT THE CENTER OF EVERYTHING

7
MINS

TO
INTERNATIONAL
AIRPORT (IGI)

3
MINS

TO
ASIA'S LARGEST CONVENTION
& EXHIBITION CENTRE

5
MINS

TO
DIPLOMATIC
ENCLAVE

20
MINS

TO
SOUTH
DELHI

7
MINS

TO
DELHI'S LARGEST
TRANSPORTATION HUB

15
MINS

TO
INTERNATIONAL
SPORTS COMPLEX

ENJOYING THE SOCIAL FABRIC OF DELHI AND GURUGRAM



15 +
INTERNATIONAL
SCHOOLS



8 +
MULTI-SPECIALITY
HOSPITALS



5 +
FIVE STAR
HOTELS





ARTISTIC IMPRESSION

RIISING IN THE HEART OF DELHI-NCR



ADJACENT TO DELHI



RIGHT NEXT TO
INTERNATIONAL AIRPORT(IGI)



JUST A STONE'S THROW
AWAY FROM IICC



DIPLOMATIC ENCLAVE II
IN CLOSE VICINITY

Discover what awaits you when you make M3M Capital your new home. From the open green spaces to the finest closed interiors to a location that connects you to the world, all this gets enclosed in this single destination.

UNMATCHED & UNPARALLELED LIVING EXPERIENCE

100+ AMENITIES AND SERVICES



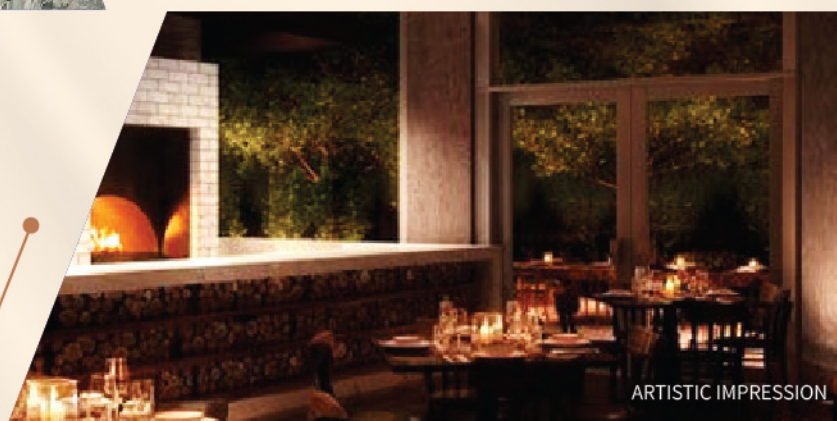
SOAK IN THE SUN IN
AN **OUTDOOR POOL**

BRING YOUR **SPORTS**
PASSION ALIVE



LET YOUR
CHILDREN RUN FREE IN
SAFE ENVIRONS

DINE-IN AT THE
LARGEST CLUBHOUSE
IN THE VICINITY





ARTISTIC IMPRESSION

2.5 & 3.5 BHK LUXURY GOLF RESIDENCES

HIGHLY
EFFICIENT HOMES

PRIVATE FOYER
WITH EVERY RESIDENCE

SPACIOUS
BALCONIES

M&M
0.5 EDGE | CUSTOMIZE YOUR EXTRA
0.5 ROOM YOUR OWN WAY !



ARTISTIC IMPRESSION

HOME LIBRARY



ARTISTIC IMPRESSION

HOME OFFICE



ARTISTIC IMPRESSION

HOME GYM



DEDICATED DROP-OFF



GRAND TOWER LOBBY

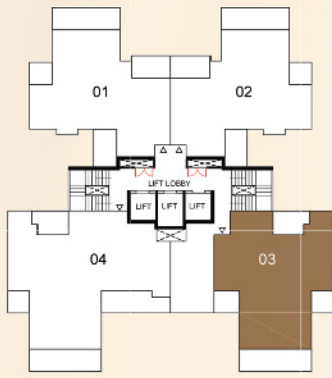


UNIT PLAN 3.5 BHK

PRIVATE FOYER + 3.5 BEDROOM
3 BEDROOMS + 0.5 BHK - STUDY/BAR/DEN
EXCLUSIVE STORAGE AREA

1,665 SQ. FT. (APPROX.)

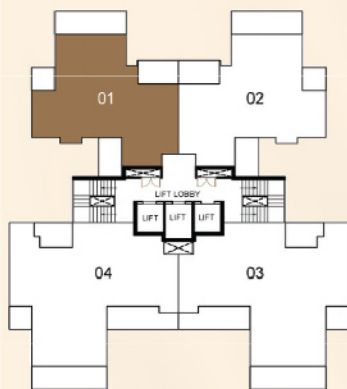
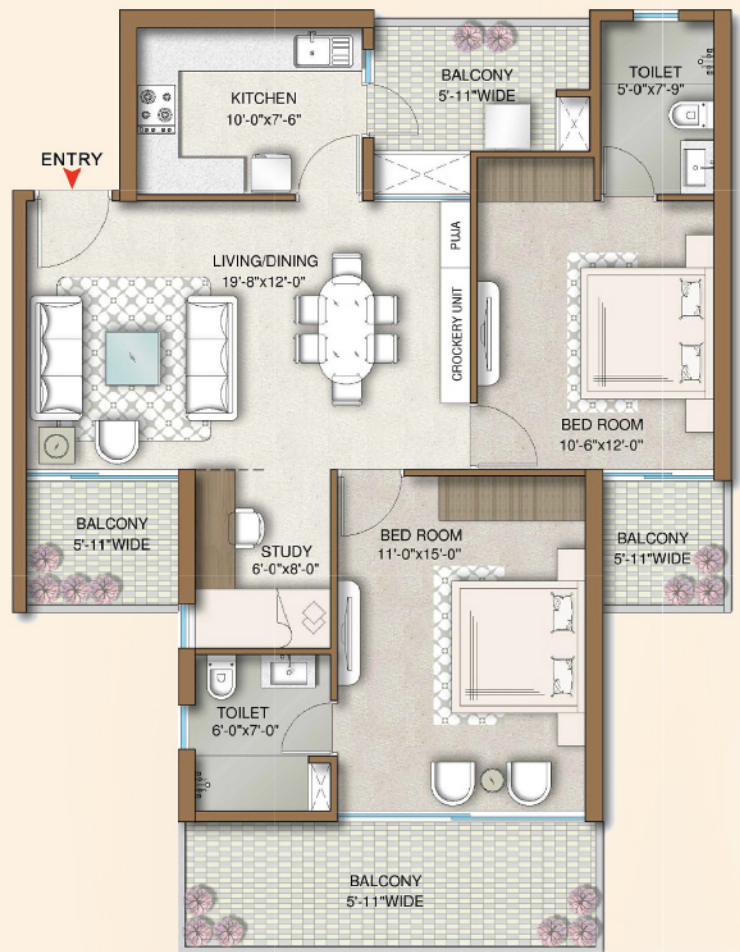




UNIT PLAN 2.5 BHK

PRIVATE FOYER + 2.5 BEDROOM
2 BEDROOMS + 0.5 BHK - STUDY/BAR/DEN
EXCLUSIVE STORAGE AREA

1,330 SQ. FT. (APPROX.)



UNIT PLAN 2.5 BHK

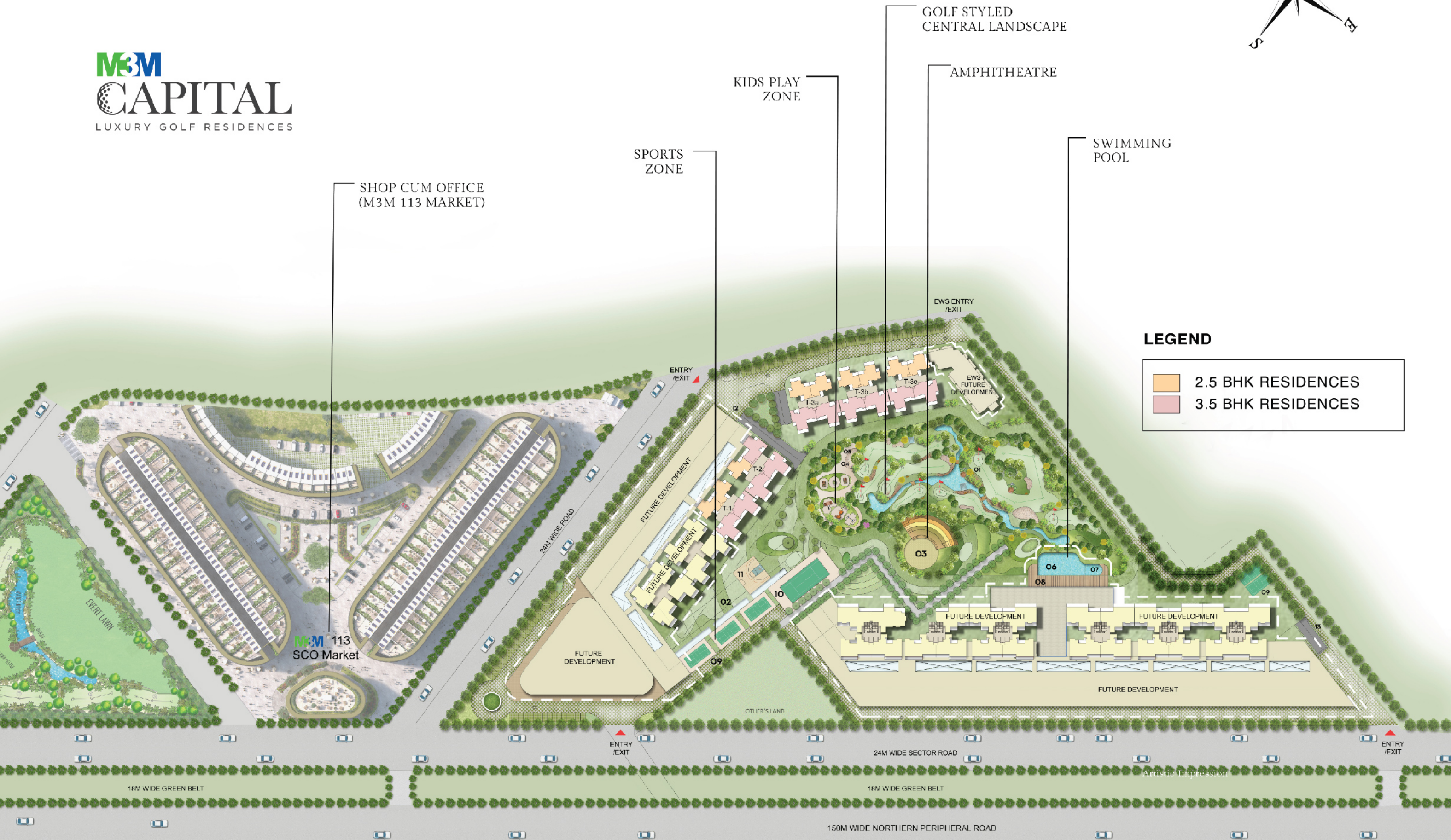
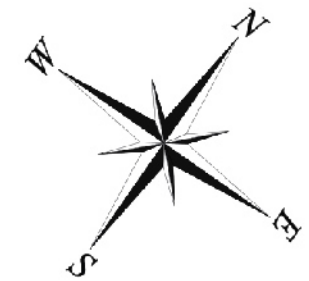
PRIVATE FOYER + 2.5 BEDROOM
2 BEDROOMS + 0.5 BHK - STUDY/BAR/DEN
EXCLUSIVE STORAGE AREA

1,310 SQ. FT. (APPROX.)



A CITY WITHIN ITSELF

M3M
CAPITAL
LUXURY GOLF RESIDENCES





UNION BUILDMART PRIVATE LIMITED
(CIN- U70100HR2012PTC089615)

Registered Office :

Unit No. SB/C/5L/Office/008, M3M Urbana Sector-67,
Gurugram, Manesar, Urban Complex, Gurugram-122102, Haryana, India

Sales Gallery

M3M Experia, Sector-113, Smart City, Delhi Airport, Dwarka Expressway, Gurugram-122017,
Haryana, India

CRM Cell

M3M Urbana Business Park, 10th Floor,
Tower A, Sector - 67, Golf Course Road (Extn.),
Gurugram-122101, Haryana, India

Project Site

M3M Capital, Sector-113, Smart City, Delhi Airport, Dwarka Expressway,
Gurugram-122017, Haryana, India

+0124 47320000 | 1800 123 3333 | www.M3MCapital.com

Disclaimers: All information, images and visuals or sketches including landscaping shown in this advertisement are only an architect's impression, representative images or artistic renderings and not to scale. Nothing contained herein intends to constitute a legal offer and does not form part of any legally binding agreement and/or commitment of any nature. The Promoter Company endeavours to keep the information up to date and correct. Recipients/viewers are advised to exercise their discretion in relying on the information shown/provided and are requested to verify all the details, including area, amenities, services, terms of sales and payments and other relevant terms independently with the Promoter Company, have thorough understanding of the same and take appropriate advice prior to concluding any decision for buying any Unit(s) in the Project.

"M3M Capital" is a residential Group Housing Colony which is registered with Haryana Real Estate Regulatory Authority vide Regn. No. RC/REP/HARERA/GGM/531/263/2022/06, dated 02.02.2022, being developed on the Project land admeasuring 4.856 acres being part of total licensed land admeasuring 15.03125 acres, situated at Sector-113, Gurugram, Haryana. The project is being developed by M/s Union Buildmart Private Limited vide a license from DTCP under New Integrated Licensing Policy- 2016. All facilities and Project details mentioned in this advertisement are actual specifications, amenities and facilities provided by the Promoter Company as per approved plans. The use of word 'M3M' shall in no manner be construed or interpreted as M3M India Pvt. Ltd. being the Promoter and / or Developer of the Project.

Dispute with regard to the interpretation of information will be subject to the exclusive jurisdiction of District Courts at Gurugram and Hon'ble High Court of Punjab & Haryana at Chandigarh, India.

*Taxes and statutory charges extra as applicable and terms and conditions apply

**Terms & Conditions apply. 1 Hect. = 2.471 Acres, 1 Acre = 4840 sq. yds. or 4046.86 sq. mtrs., 1 sq. mtr. = 10.764 sq.ft.